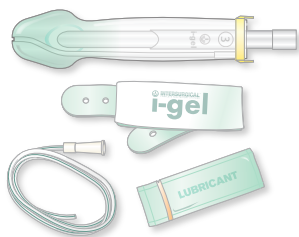
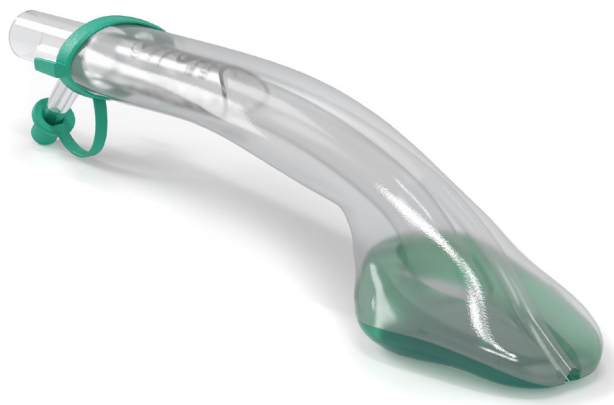




Stay focused on what matters



i-gel O₂ Resus Pack

**Four things in one pack,
one less thing to think about.**

The new i-gel O₂



Hook ring

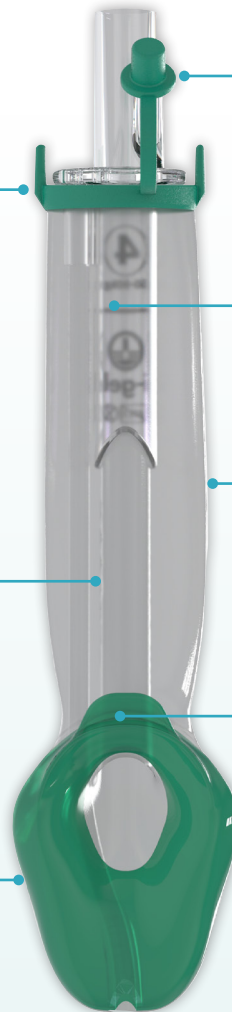
To secure the i-gel O₂ in position with the airway support strap.

Gastric channel

Enhances patient safety by providing a mechanism for the management of regurgitant fluid.

Non-inflatable cuff

Eliminates the need for cuff inflation after insertion, allowing easy and rapid insertion.



Supplementary oxygen port

For the administration of passive oxygenation as a component of cardiocerebral resuscitation (CCR).

Integral bite block

Reduces the possibility of airway channel occlusion.

Buccal cavity stabiliser

Aids insertion and eliminates the potential for rotation.

Epiglottic rest

Reduces the possibility of epiglottis 'down folding' and airway obstruction.

Airway innovation since 2007

i-gel is the innovative second generation supraglottic airway device from Intersurgical launched in 2007. The first major



development since the laryngeal mask airway, the i-gel changed the face of airway management and is now widely used in anaesthesia and resuscitation around the world.

The non-inflatable cuff

The i-gel O₂ gets its name from the innovative soft, gel-like material from which it is made. It is the innovative application of this material that has enabled the development of a unique non-inflatable cuff. This means there is no need for cuff deflation prior to insertion and no cuff inflation after placement to secure a seal, shortening and simplifying the preparation and insertion procedure.

Insertion

The i-gel O₂ is incredibly easy to use. Insertion is rapid and can normally be achieved in less than 5 seconds.




The simplicity of i-gel means the insertion technique is instinctive, reliable and does not require or benefit from the insertion of fingers or thumbs into the patient's mouth.

Fixation

The i-gel O₂ Resus Pack includes a specially designed airway support strap for securing the i-gel O₂ in position. Fixation is easily achieved by sliding the strap under the patient's neck and securing it in place to the hook ring on the collar of the i-gel O₂. This makes it ideal for use where adhesive tape is unsuitable, such as on patients with facial hair.

Ordering information

The i-gel O₂ Resus Pack contains an i-gel O₂, with an easily removable inner tray, containing a sachet of lubricant, airway support strap and suction tube, all packaged in a specially designed clear, sterile, rigid pack. This unique design ensures protection of the contents, both in transit and in storage. The i-gel O₂ has a colour coded hook ring to allow quick and easy identification of size. The i-gel O₂ Resus Pack is available in three adult sizes.

8703000 ■	i-gel O ₂ Resus Pack – includes a size 3 i-gel O ₂ , sachet of lubricant, airway support strap and a 12FG suction tube. For small adults 30-60kg	6	
8704000 ■	i-gel O ₂ Resus Pack – includes a size 4 i-gel O ₂ , sachet of lubricant, airway support strap and a 12FG suction tube. For medium adults 50-90kg	6	
8705000 ■	i-gel O ₂ Resus Pack – includes a size 5 i-gel O ₂ , sachet of lubricant, airway support strap and a 12FG suction tube. For large adults 90+kg	6	

Stay in touch



Visit the i-gel web site www.i-gel.com

IS6.6 • DC Issue 1 06.12